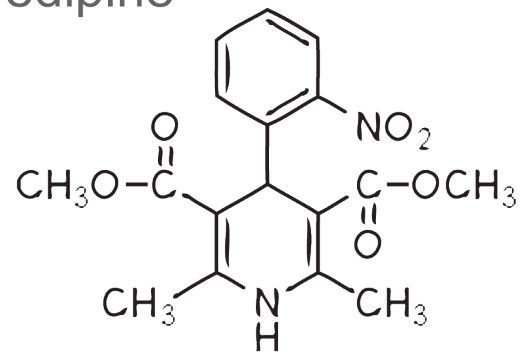


Nifedipine



BIOLOGY

In the CA1 region of the hippocampus, inhibition of L-type voltage-dependent calcium channels (VDCC) by nifedipine enhances synaptic transmission as well as Long-Term Potentiation. It has been proposed that such effect is mediated by pre-synaptic L-type calcium channels.

PATHOLOGIES ASSOCIATED WITH L-TYPE VDCC

- Stroke
- Cognitive Dysfunctions
- Epilepsy
- Depression

BIBLIOGRAPHY

- O'Regan, MH et al. (1991), *Exp. Brain Res.*, 84, 224-228.
- Disterhoft, JF et al. (1993), *Clin. Neuropharmacol.*, 16 suppl.1, S12-S24.
- Catterall, WA (2000), *Annu. Rev. Cell. Dev. Biol.*, 16, 521-555.
- Godukhin, O et al. (2002), *Neuropharmacology*, 42, 459-466.
- Bourinet, E & Zamponi, GW (2005), *Curr. Top. Med. Chem.*, 5, 539-546.
- Striessnig, J et al. (2006), *Biochem. Soc. Trans.*, 34, 903-909.

Last update: March, 6, 2009