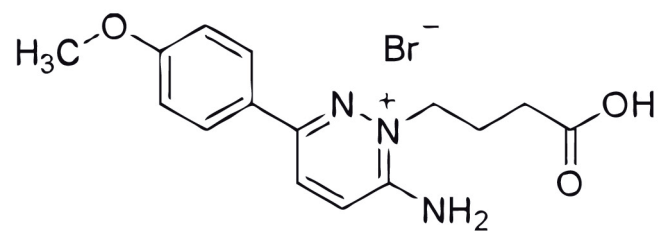


Gabazin (SR-95531)



## BIOLOGY

“Phasic” GABA<sub>A</sub> receptors (located in the postsynaptic membrane) are fully inhibited by a low micromolar concentration of gabazin whereas “tonic” GABA<sub>A</sub> receptors (at extra-synaptic location) are not. Inhibition of “phasic” GABA<sub>A</sub> receptors leads to the overall disinhibition of large pyramidal neurons recorded in the CA1 region while stimulating in the CA3/CA1 region. Then, an increase of fEPSPs amplitude is observed in the stratum pyramidale layer whereas no change is observed in the stratum radiatum layer.

## PATHOLOGIES ASSOCIATED WITH GABA<sub>A</sub> RECEPTORS

Epilepsy  
Anxiety  
Sleep Disorders

## BIBLIOGRAPHY

Bai, D et al. (2001), Mol. Pharmacol., 59, 814-824.  
Stell, BM & Mody, I (2002), J. Neurosci., 22, RC223.  
Yeung, JF et al. (2003), Mol. Pharmacol., 63, 2-8.  
Semyanov et al. (2004), Trends Neurosci., 27, 262-269.  
Cossart, R. et al. (2005), Trends Neurosci., 28, 108-115.  
Farrant, M & Nusser, Z. (2005), Nat. Rev. Neuroci., 6, 215-229.

Last update: March, 6, 2009